



ĀMAN

ROSA ALPINA

Fact Sheet
2026

A contemporary take on classic Alpine elegance, San Cassiano’s historic hotel emerges as a fully-fledged Aman following an extensive renovation, imagined by Jean-Michel Gathy of Denniston. Balancing authenticity and timeless refinement, mountain living is redefined at Aman Rosa Alpina. Resting beneath La Varella and Conturines, Aman Rosa Alpina serves as the perfect base for both wellness and restoration, courtesy of the expansive Aman Spa, and exploring the region’s natural beauty throughout the seasons. The resort offers mountain walks in the summer and unmatched access to Dolomiti Superski in winter.

LOCATION

- Set in the heart of the Italian Dolomites in the village of San Cassiano, belonging to the Alta Badia valley, part of the 29,652-acre Dolomiti Superski area; the resort sits at an altitude of 1,537 metres with the highest point, the Marmolada Peak, reaching 3,343 metres
- The resort offers an extensive 1,200 kilometres of ski runs and 450 lifts

SEASONS

- Summer (June – August): From 10°C (50°F) to 25°C (77°F)
- Autumn (September - October): From 0°C (32°F) to 12°C (53°F)
- Winter (December – early April): From -10°C (14°F) to 9°C (48°F)

GETTING THERE

	Venice (VCE)	Bolzano (BZO)	Innsbruck (INN)	Milan Malpensa (MXP)
Car	2.5 hours	1.5 hours	2 hours	5 hours
Helicopter	45 minutes	22 minutes	30 minutes	70 minutes



Accommodation

Combining a sense of heritage with Aman's design language, 51 spacious rooms and suites – including the exclusive two-bedroom Aman Suite – are inspired by the raw beauty of their mountain surrounds.

Reflected in the use of natural materials, such as wood and stone, the great outdoors anchors each and every space. Lofty and private, rooms and suites offer expansive balconies and floor-to-ceiling windows from which to become immersed in the majesty of the Dolomites, while inside, glass-enclosed working fireplaces and separate living areas provide ample room to reset.

Several rooms can also be connected, catering to families and groups.

4	Superior Room	40-44sqm/430-474sqft
6	Deluxe Room	47-60sqm / 506-646sqft
2	Premier Room	56-57sqm/603-614sqft
12	Junior Suite	54-79sqm/581-850sqft
4	Superior Suite	57-79sqm/614-850sqft
9	Deluxe Suite	72-87sqm/775-936sqft
7	Premier Suite	85-97sqm/914-1,044sqft
1	Dolomites Suite	100sqm/1,076sqft
4	Rosa Alpina Suite	116-136sqm/1,248-1,463sqft
1	Zeno Suite	145sqm/1,550sqft
1	Aman Suite	158sqm/1,700sqft



SUPERIOR ROOM
40-44sqm/430-474sqft

With a working fireplace, Superior Rooms offer king or twin beds, expansive bathrooms with walk-in rain showers (some with steam showers) and double vanities. Floor-to-ceiling windows showcase village views.

DELUXE ROOM
47-60sqm/505-645sqft

Deluxe Rooms offer floor-to-ceiling windows, king or twin beds and a spa-like bathroom with rain shower, soaking tub and double vanity. Fireplaces add warmth and charm, while many also offer private balconies with village views.

PREMIER ROOM
56-57sqm/603-614sqft

Premier Rooms offer comfort and elegance with floor-to-ceiling windows overlooking the village, king or twin beds, a walk-in wardrobe and working fireplace. The spacious bathroom features a soaking tub, walk-in rain shower and double vanity.

JUNIOR SUITE
54-79sqm/581-850sqft

Junior Suites offer a serene Alpine ambiance bathed in natural light via private balconies. Fireplaces, oversized king or twin beds, a walk-in wardrobe and a large bathroom with rain shower, soaking tub and double vanity complete the space.

SUPERIOR SUITE
57-79sqm/614-850sqft

Ranging from 57-79 square metres (614-850 square feet) Superior Suites exude a warm alpine ambiance, with separate bedroom and living areas featuring large windows that frame village views.

Each suite features an oversized king bed, dedicated workstation and a comfortable sofa bed, to accommodate a child. Meanwhile, the bathroom offers a rain shower and soaking tub for an added sense of sanctuary.



DELUXE SUITE

72-87sqm/775-936sqft

Exuding the atmosphere of an Alpine apartment, Deluxe Suites enjoy a generous open floor plan, complete with living space, dual-sided fireplace and a spacious balcony with mountain, forest or village view. They offer king or twin beds, a walk-in wardrobe and a bathroom with a rain shower and double vanity.

PREMIER SUITE

85-97sqm/914-1,044sqft

Premier Suites provide restorative mountain or forest views from spacious private balconies. Alongside an oversized king bed, the suites also enjoy separate living spaces with a fireplace, walk-in wardrobes and spa-like bathrooms with rain showers, soaking tubs and double vanities.

DOLOMITES SUITE

100sqm/1,076sqft

On the hotel's top floor, the Dolomites Suite offers mountain views from its terrace and private outdoor sauna. Inside, it features a spacious living area, central fireplace, private office, walk-in wardrobe, king bed and a bathroom with rain shower, soaking tub and double vanity.

ROSA ALPINA SUITE

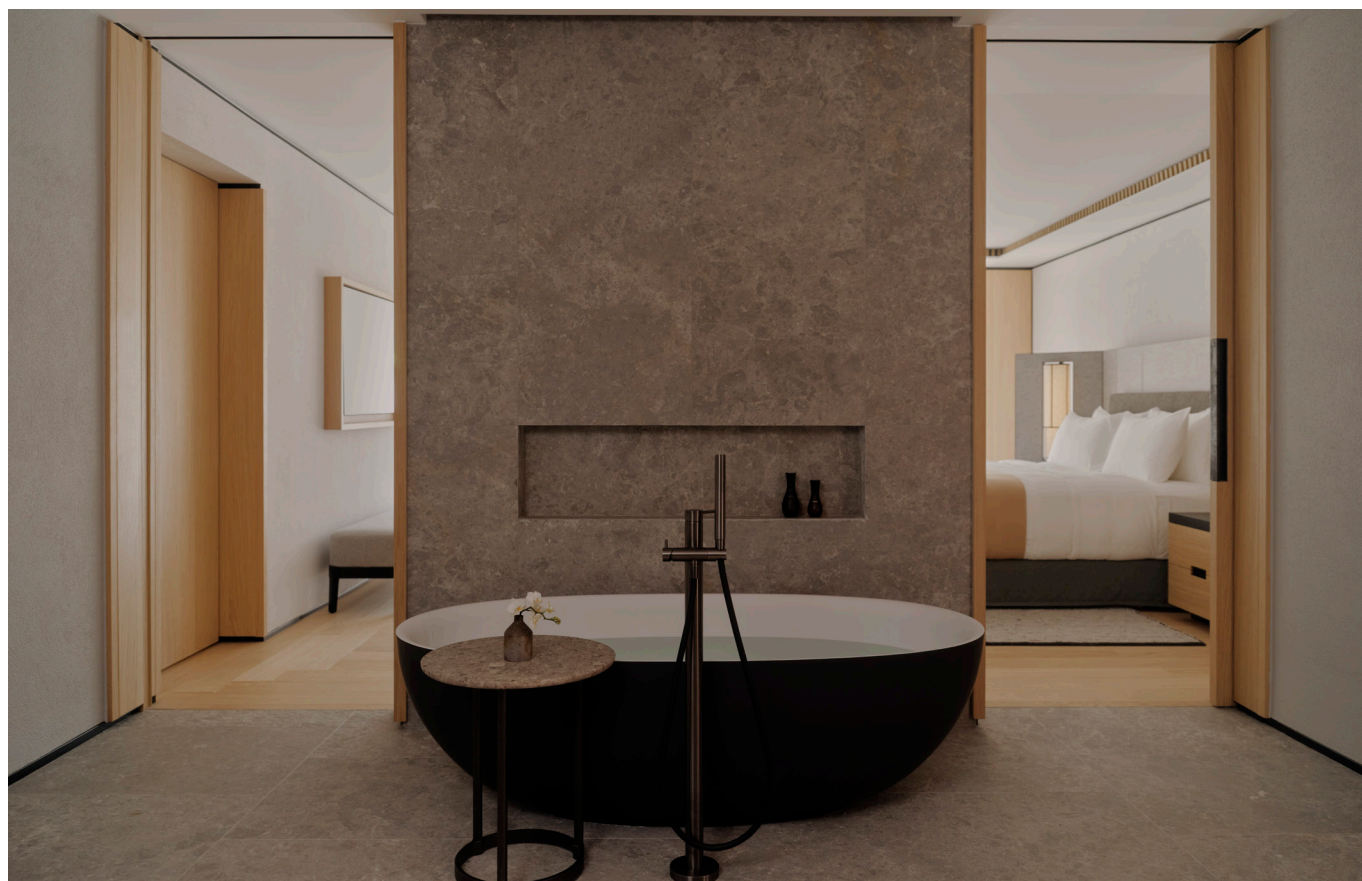
116-136sqm/1,248-1,463sqft

Ideal for families or groups with joining room options available, the Rosa Alpina Suites feature a king bed, walk-in wardrobe, living room with a fireplace and a dining space. Forest or village views can be admired through floor-to-ceiling windows, while the spa-like bathroom provides a rain shower, soaking tub and double vanity.

ZENO SUITE

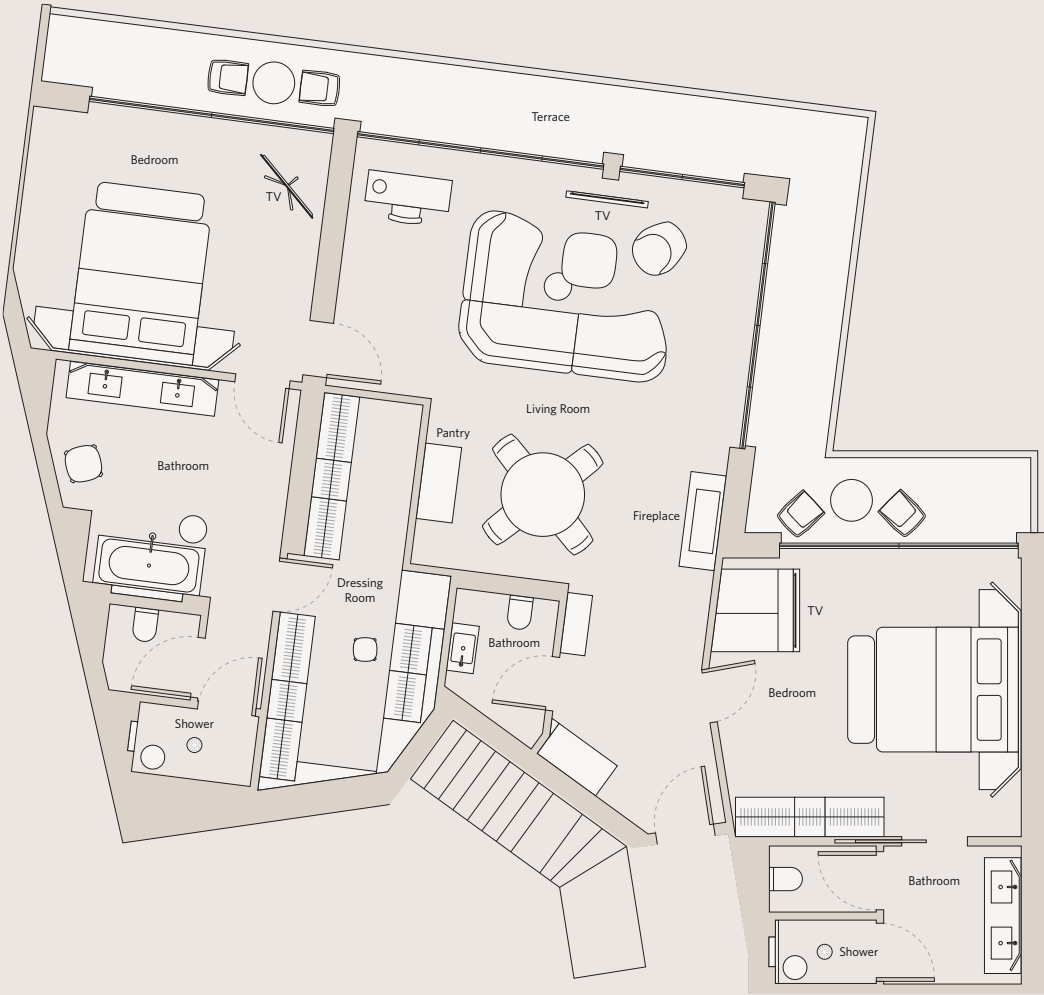
145sqm/1,550sqft

An elegant mountain retreat, the Zeno Suite features a spacious living area with a fireplace and bar, a kitchenette, dining area for eight guests, a private garden, cinema, large bathroom with hammam and an expansive king bedroom with Alpine views. Joining room options makes it ideal for families.

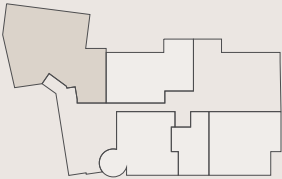


AMAN SUITE
158sqm/1,700sqft

The hotel’s largest suite, the Aman Suite comprises two king bedrooms with ensuites featuring steam showers (principal with soaking tub), a spacious, south-facing terrace with forest views and an elegant dining area for six guests. The interior features panoramic windows, a central fireplace and walk-in wardrobes, ideal for families or groups.



FLOOR	Level 1
SUITE NO.	116
SIZE	158 sqm / 1,700 sqft
VIEW	South



Mountains by Brigitte Niedermair

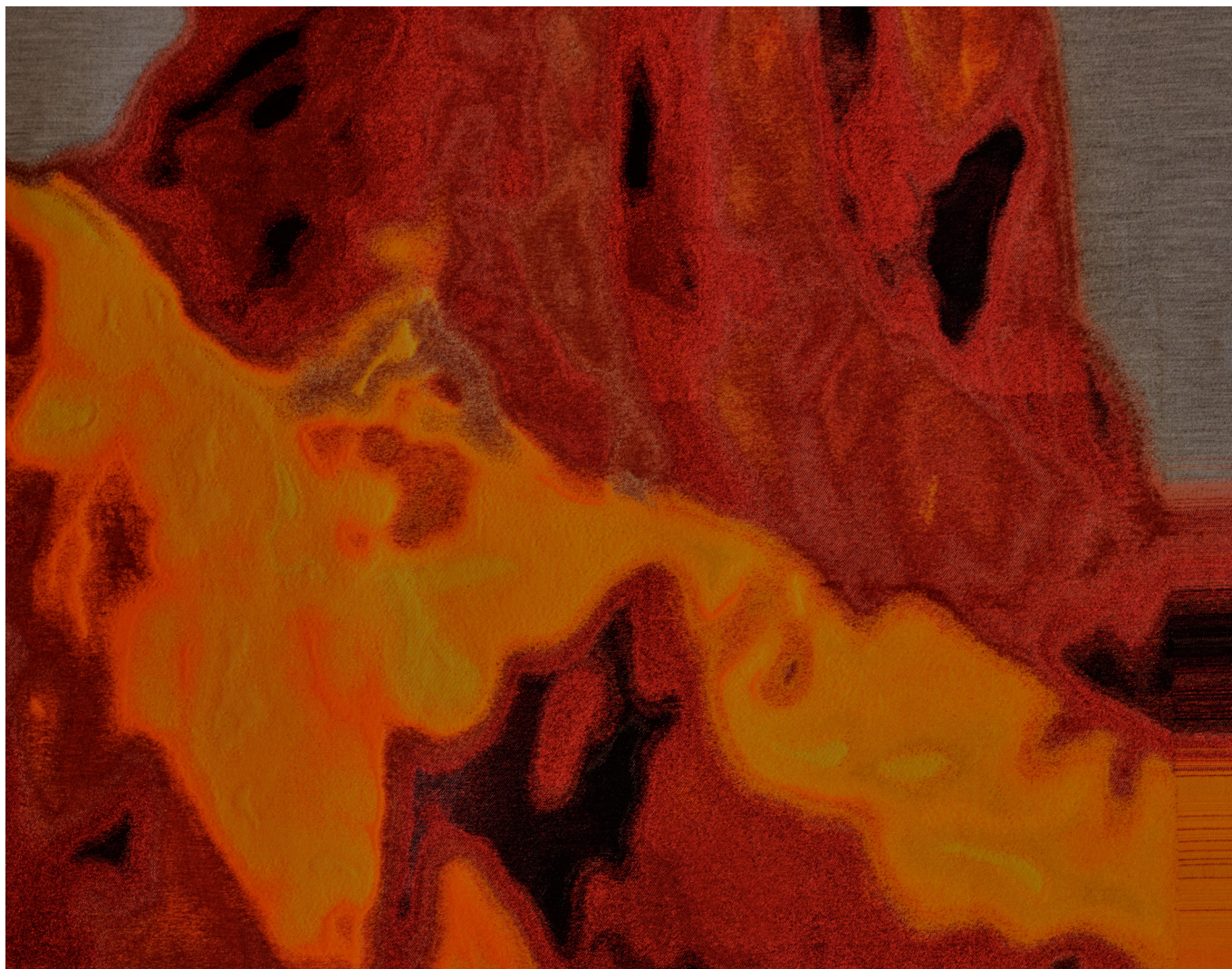
An internationally acclaimed photographer, Brigitte Niedermair holds a personal connection with the Pizzinini family, of Rosa Alpina, following her time working in the hotel's housekeeping department in the 1990s. This long history, accompanied with her understanding of the surrounding area, made her the perfect artist to commission bespoke pieces for the Reception and Il Salotto.

To create the dramatic textiles that hang in these communal areas, Brigitte took photos of the Dolomites and created an inspiring interpretation of an imaginary mountain landscape. These pictures were woven with a mix of wool, polyamide and viscose fibres by renowned Italian textile producer, Giovanni Bonotto.

“Le mie montagne sono immaginate, esistono e non esistono. Sono morbide e accoglienti come quelle che abbracciano questo albergo. Ho scelto tutte quelle che amo di più e le ho composte in questi arazzi. Poi le ho immerse nella luce del sogno.”

“My mountains are imaginary, they exist and do not exist. They are soft and welcoming like those that embrace this hotel. I chose the ones I love most and composed them in these tapestries. Then I immersed them in the light of the dream.”

- Brigitte Niedermair



Dining

Aman Rosa Alpina offers four distinct dining venues, each curated by Executive Chef Gianluca Salvato and offering a delectable array of cuisines – from traditional Alpine indulgences to simple Italian specialities – and an extensive wine selection.

THE GRILL

Capacity: 63 indoors,
28 outdoors

- Open daily from 12pm until 2pm and from 6.30pm until 10.30pm
- Serving fresh, seasonal plates
- An atmospheric restaurant with a live grill offering a refreshing take on local dishes presented family style
- Alongside the main menu, artisanal pizzas are available for lunch and dinner
- Extensive international wine list
- Outdoor terrace facing the village with views of San Cassiano church
- Private dining options available during the summer months

IL SALOTTO

Capacity: 75 indoors,
22 outdoors (terrace
& Winter Garden)

- Open daily from 8am until midnight
- Food served from 11am until 10.30pm
- A charming alpine lounge space
- Offering an array of refined hot and cold beverages, as well as tea and hot organic infusions
- Alongside drinks, a concise all-day menu is available from 11am to 10pm at the outdoor terrace and Winter Garden, set opposite the hotel's forest garden, perfect for alfresco refreshments
- In the evening, the space transforms into a piano bar

HERITAGE ROOM

Capacity: 68 indoors

- An inviting breakfast room
- Open daily from 7am-10.30am
- Offering a refined international breakfast, including freshly baked bread, pastries, made-to-order eggs and an array of organic and gluten-free dishes
- Light-filled restaurant with forest views
- The Heritage Room parlays as an unforgettable events space, ideal for weddings and special occasions



ENJU

Capacity: 48 indoors

- Open from Tuesday to Saturday from 6.30 until 10.30pm (Last order at 9.30pm)
- An elegant setting in which to enjoy authentic Japanese Shabu Shabu dining
- Offering multi-course tasting menus that includes swirling premium cuts of meat and fresh, seasonal vegetables in a bubbling hot pot
- Serving a selection of fine Japanese sakes and rare teas

DI VINO ROOM

Capacity: eight

- Available upon reservation
- Located next to the Cigar Lounge
- A connoisseur's library tailored for exclusive wine experiences and private dinners
- Showcasing Aman Rosa Alpina's rare collection of vintages
- Expert-led tastings immersing guests in Italy's rich winemaking culture

CIGAR LOUNGE

Capacity: 12 indoors,
eight outdoors

- Refined, wood-panelled space overlooking the forest through floor-to-ceiling glass windows
- Large collection of international, premium cigars and aged spirits
- Outdoor terrace with Alpine views



Entertainment Rooms

A warren of entertainment spaces occupy the lower-ground floor. In addition to a children's Playroom, Teen Lounge and Billiard Room, three cinema rooms, with a capacity of up to 12, are available for private screenings upon request.

PLAYROOM

- Creative corner
- Lounge area
- Climbing wall

TEEN LOUNGE

- Relaxation space
- iWall
- PlayStation
- Football table

BILLIARD ROOM

- Billiards table
- Football table
- Adults-only lounge space



Aman Spa

Unwind after the day's adventures at the expansive Aman Spa, a serene sanctuary spread across two floors, featuring seven tranquil treatment suites. Relax in the 20-metre outdoor heated infinity pool and indoor swimming pool with forest vistas or enjoy the healing benefits of the Jacuzzi, steam bath, Bio sauna, Finnish sauna and cold plunge pool. Maintain fitness levels in the yoga studio and fully equipped gym.

To enhance your wellness journey, a bespoke spa menu presents a diverse array of specialised treatments, ensuring a wholly restorative experience.

AMAN SPA

- Open daily from 9am to 8pm
- Surrounded by south-facing forest views
- 1,684 square metres spread over two levels
- Featuring an adults-only (guests aged sixteen and above) indoor swimming pool, cold-plunge pool, Finnish sauna, steam bath, seven private treatment suites, Hair & Nail Salon and two medical treatment suites
- 20-metre heated outdoor infinity swimming pool, situated on the upper level of the Aman Spa
- Signature treatments include the Alpine Muscle Relief massage, designed to restore guests after long days spent exploring the great outdoors
- Total: 1,684 square metres (indoor: 1,385,98 square metres; outdoor area: 90,8 square metre pool deck; 141-square-metre terraces in spa suites; 66,56 square metres of zen garden)



FITNESS CENTRE

- 210 square metres
- State-of-the-art TechnoGym equipment including cardiovascular and weight-training machines
- Private fitness sessions with professional trainers
- Yoga Studio with 22 square metres

HEATED OUTDOOR INFINITY SWIMMING POOL

- 20-metre heated outdoor infinity swimming pool
- Situated on the upper level of the Aman Spa
- Lined with daybeds on the sundeck

HAIR & NAIL SALON

- Hair washing and hair styling station
- Manicure and pedicure service station

BOUTIQUE

- Featuring Aman Skincare, Fine Fragrances, Candles and lifestyle accessories
- The Boutique also features Aman Sportswear



Summer & Autumn Outdoor Activities

WALKING & HIKING

- The Dolomites is a UNESCO World Heritage site, surrounded by many natural parks offering a range of trails from easy excursions to more demanding treks
- Guides, available upon request, start directly from the hotel with no need for car transfers

CYCLING

- Mountain biking tracks offer both forest and meadow routes for cyclists of all levels and abilities
- Mountain bikes are available via rental hire service
- The region is popular for its dramatic road routes through the mountains and also plays host to the popular annual Maratona dles Dolomites race
- The area offers dynamic downhill biking pistes

CLIMBING

- From mountaineering to climbing, routes of all difficulties exist in the region
- There are several via ferrata routes, enabling easy access to the summits of the greatest Dolomite peaks

GOLF

- Open from June to October Golf Club Alta Badia (PAR 72), a nine-hole golf course, is just a few kilometres from the centre of Corvara, with spectacular surroundings at an altitude of 1,700 metres

SKY RUNNING

- High-altitude mountain running that operates on technical, bumpy and challenging rocky trails, sometimes with equipped passages



Outdoor Winter Activities

SKIING & SNOWBOARDING

- San Cassiano is connected to the Dolomiti Superski area with 1,200 kilometres of slopes and 450 lifts all covered under one ski pass
- Snow-making machines ensure there's always ample fresh snow
- The area offers pristine runs for all levels and abilities

CROSS-COUNTRY SKIING

- Offered just outside the village of San Cassiano, traverse an incredible route with breathtaking scenery
- Rosa Alpina's signature Mindful Skiing experience promotes stress reduction while improving fitness

SKI BUTLER

- Ski fitting is arranged by Aman Rosa Alpina's Ski Butler prior to arrival
- Every morning the team prepares guest equipment allowing ease of access to the shuttle which operates all day to and from the nearby Piz Sorega ski lift, located 300 metres from the hotel

COMPETITIONS

- For more than 40 years, Alta Badia has hosted the Men's Giant Slalom Ski World Cup and parallel ski races on the famous Gran Risa run. Taking place in December, guests can obtain tickets from the hotel concierge
- Nearby Cortina d'Ampezzo will host selected competitions

OTHER WINTER ACTIVITIES

- Winter hiking tours, snow shoeing, mountaineering, ice climbing, tobogganing, sky running and ice skating are all offered nearby



AMAN

AMAN
ROSA ALPINA

Strada Micura de Rue, 20
39036 San Cassiano in Badia (BZ) - Dolomites, Italy

Tel: +39 0471 849500
Email: rosaalpina.res@aman.com

AMAN
CENTRAL RESERVATIONS

Tel: +1 754 216 7830
Italy: +39 0471 1930400

Email: reservations@aman.com
aman.com