

A large, modern interior space, likely a hotel lobby or lounge. The ceiling is high and features a grid of recessed lighting. The walls are made of dark, textured stone or concrete. In the center, a large, dark, rounded vase sits on a small, dark, rectangular platform. The vase is filled with a dense arrangement of thin, dark branches, some of which have small, yellow and red flowers. The floor is made of large, dark, polished tiles that reflect the vase and the branches. In the background, there are several seating areas with modern, light-colored chairs and sofas. The overall atmosphere is minimalist and sophisticated.

ĀMAN

TOKYO



Aman Tokyo is an exclusive sanctuary set high above the Japanese capital. It is Aman's first urban concept hotel, with world-class dining and spa facilities. The hotel offers dramatic panoramas of the Imperial Palace Gardens and surrounding Tokyo landmarks. At the foot of Aman Tokyo lies the Otemachi Forest, a meticulously created natural oasis. The hotel's stunning lobby, soaring nearly 30 metres, features an engawa – a wooden detail seen in traditional Japanese residences that divides the inside and out.

Location

- Walking distance to Tokyo Station in the thriving Otemachi district
- Occupies the top six floors of The Otemachi Tower
- Views of the Imperial Palace Gardens and Mt Fuji
- Close to the Imperial Palace Gardens and the Ginza shopping district

Access

- The Otemachi Tower is connected to five-line Otemachi subway station
- Close to Tokyo Station, offering access to the nationwide bullet train network
- Haneda Airport (40-min drive) handles domestic and international flights
- Narita Airport (60-min drive) handles international flights



Accommodation

- 84 suites, on levels 35-38
- Unique layouts and magnificent city views
- Design inspiration draws on traditional Japanese residences
- Washi paper, wood and stone feature prominently
- Each room has a large furo deep-soak bathtub

4	Tokyo Suites	77m ² / 828ft ²
30	Deluxe Suites	71m ² / 764ft ²
10	Garden View Suites	71m ² / 764ft ²
4	City Suites	121m ² / 1,302ft ²
24	Grand Suites	141m ² / 1,517ft ²
8	Panorama Suites	139m ² / 1,496ft ²
4	Aman Suites	157m ² / 1,689ft ²

Tokyo Suites

- Views of east Tokyo with sunrise
- Sunken lounge area with daybed

Deluxe Suites

- Views of the Imperial Palace Gardens and Mt Fuji
- Combined bedroom and living area

Garden View Suites

- Located on the top floor
- Same features as Deluxe Suites but with loftier views

City Suites

- Immersive views of northeast Tokyo
- Separate living room with workspace and dining area with dual-aspect views

Grand Suites

- Offering an abundance of space and light
- Spectacular city views
- Customisable workspace

Panorama Suites

- Panoramic dual aspect city views
- Separate bedroom, living and dining areas
- Mini wine cellar

Aman Suites

- The largest suites with the finest dual aspect views
- Overlooking the Imperial Palace Gardens and Mt Fuji



Aman Spa

- Covers 2,500m² (26,900ft²) over two floors (33-34)
- Largest and most comprehensive hotel spa in Tokyo

Spa

- Eight spa treatment rooms including an acupuncture treatment room (dressing room, treatment area, bathroom, steam shower and relaxation area)
- Breathtaking views

Fitness Centre

- Cardiovascular and weight-training machinery from Technogym and Life Fitness
- Private lessons for fitness training
- Spacious, light-filled and with city views

Yoga and Pilates Studios

- Allegro reformers and other Pilates-specific apparatus
- Private yoga and Pilates sessions available

Swimming Pool and relaxation

- 30-metre heated indoor pool
- Expansive views of the city skyline
- Traditional Japanese bath, showers, steam rooms and dressing rooms

Others

Boutique

- The Boutique is located on the 33rd floor. Souvenirs are also available at The Café by Aman and Aman Spa and La Pâtisserie by Aman Tokyo

Business Services

- Photocopying, printing, binding, faxing, scanning, courier and translation services available

Meeting Room

- Seating for six
- 52-inch TV

Boardroom

- Seating for 16
- 70-inch TV



Dining

Arva

- Traditional Italian restaurants
- Seasonal, sustainably sourced cuisine rooted in the culinary heritage of Italy
- Views of the Imperial Palace Gardens and Mt Fuji
- Houses a two-storey, glass-fronted wine cellar

Musashi by Aman

- Authentic Edomae-style sushi served at the counter
- A fine dining experience representing the very best of Japanese craftsmanship

Private Dining Rooms

- Two private rooms, each sitting up to eight guests
- Each room overlooks Arva and its magnificent view

The Lounge by Aman

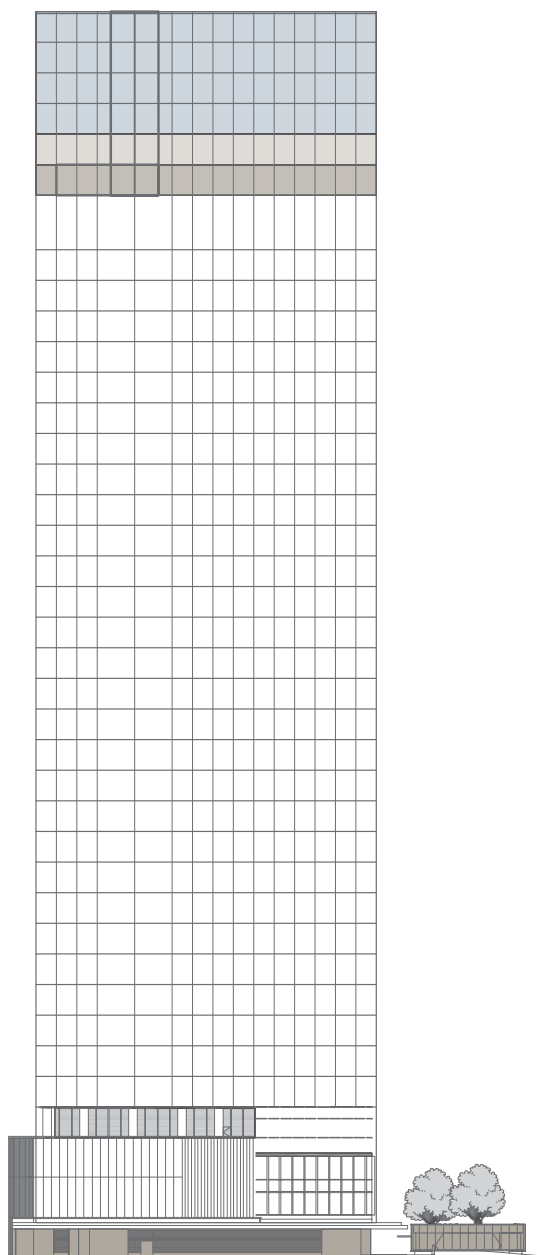
- Bar and lounge serving drinks and casual international dishes including Japanese light meals, snacks, and Afternoon Tea
- Spectacular floor-to-ceiling views over Tokyo
- Includes a Japanese-style garden lounge and bar
- Open throughout the day and into the night

The Café by Aman

- Casual French Café
- Indoor and al fresco dining
- Views of the Otemachi Forest

La Pâtisserie by Aman Tokyo

- Pastry shop located on B2 level for hotel-made cakes, breads, sandwiches, coffee and gift items such as chocolates and baked items.



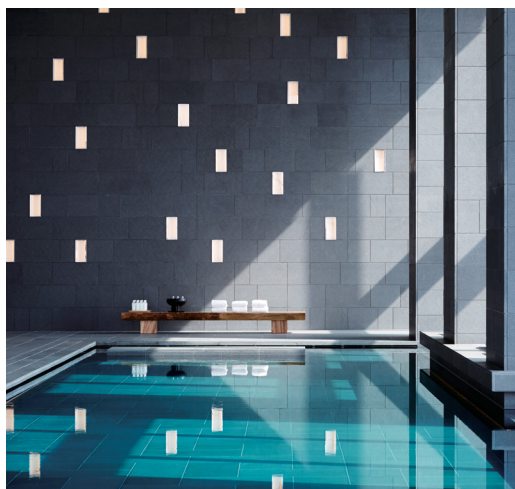
Levels 35-38
Accommodation

Level 34

Aman Spa, Swimming Pool, Japanese Bath, Fitness Centre, Yoga Studio, Pilates Studio, Musashi by Aman, Private Dining Rooms

Level 33

Garden Lounge, Arva, The Lounge by Aman, Boutique, Boardroom, Meeting Room



Level 1

Hotel Entrance, The Café by Aman
Access to La Patisserie by Aman Tokyo, B2 Level

Aman Tokyo

The Otemachi Tower, 1-5-6 Otemachi, Chiyoda-ku, Tokyo 100-0004, Japan

Tel: (81) 3 5224 3333 Fax: (81) 3 5224 3355 Email: amantokyo@aman.com

amantokyo.com

Aman Central Reservations

Tel: Singapore (65) 6715 8855 USA (1) 754 216 7830 Email: reservations@aman.com

aman.com