



Ā M Ā N

SUMMER PALACE

颐和安缦

Fact Sheet



Just steps from the Unesco-protected Summer Palace grounds lies Aman Summer Palace, the ideal location from which to discover Beijing. A serene retreat, with peaceful internal courtyards embracing traditional Chinese architecture, the resort, with its 51 rooms and suites, is housed in a series of pavilions. Some date back over a century and were originally used by guests of the Empress Dowager Cixi.

Location

- Adjacent to the East Gate of the Summer Palace
- 15km from the Forbidden City
- Provides easy access to the hutongs, the Temple of Heaven, Beijing's restaurants and art galleries
- 90 minutes from the Mutianyu Great Wall

Getting There

- 35km from Beijing Capital International Airport
- Car transfers take approximately 50 minutes each way
- 65km from Beijing Daxing International Airport



Accommodation

- 51 Rooms and Suites
- Overlook courtyards shaded by bamboo and indigenous trees
- Furniture and design features draw influence from the Ming Dynasties
- Jin clay tiles and intricate wooden screens
- Suites can be connected in different configurations

Guestrooms

- King-size bed
- Ming Dynasty-styled armoire
- Bathroom with twin vanities, separate shower/toilet

Courtyard Guestrooms

- King-size bed
- Bathroom with twin vanities, separate shower/toilet

Suites

- King-size bed
- Living area with daybed, reading chairs, writing desk
- Bathroom with twin vanities, island bathtub, separate shower/toilet

| | | | |
|----|----------------------|---------------------|------------------------|
| 8 | Guestrooms | 38m ² | 409ft ² |
| 10 | Courtyard Guestrooms | 39m ² | 420ft ² |
| 8 | Suites | 66m ² | 710ft ² |
| 17 | Deluxe Suites | 63-78m ² | 678-840ft ² |
| 7 | Courtyard Suites | 90m ² | 969ft ² |
| 1 | Imperial Suite | 283m ² | 3047ft ² |



Deluxe Suites

- King-size, most with four-poster bed
- Combined bedroom and living area, or separate bedroom
- Daybed, reading chairs, writing desk
- Bathroom with twin vanities, island bathtub, separate shower/toilet
- Dressing area with two large Ming-style wardrobes

Courtyard Suites

- Identical in design to the Suites, but more spacious

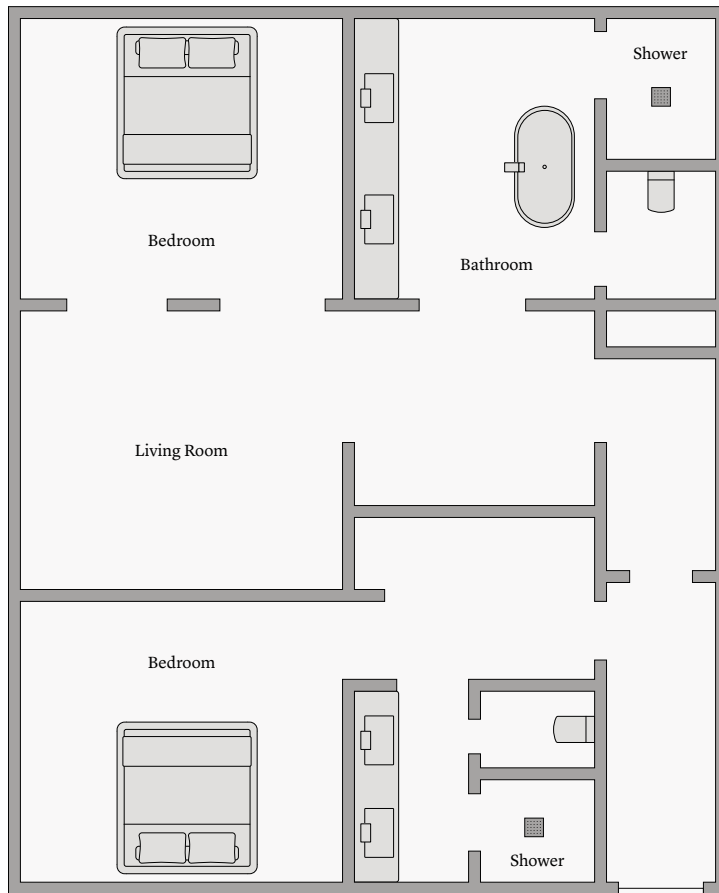
Imperial Suite

- Includes a private pavilion, a living/study pavilion and a formal pavilion
- The private pavilion houses a bedroom, bathroom, lounge, dining area and spa treatment room set around an enclosed courtyard
- The living/study pavilion overlooks the private courtyard
- The formal pavilion is a boardroom-style meeting/dining room for 16 guests

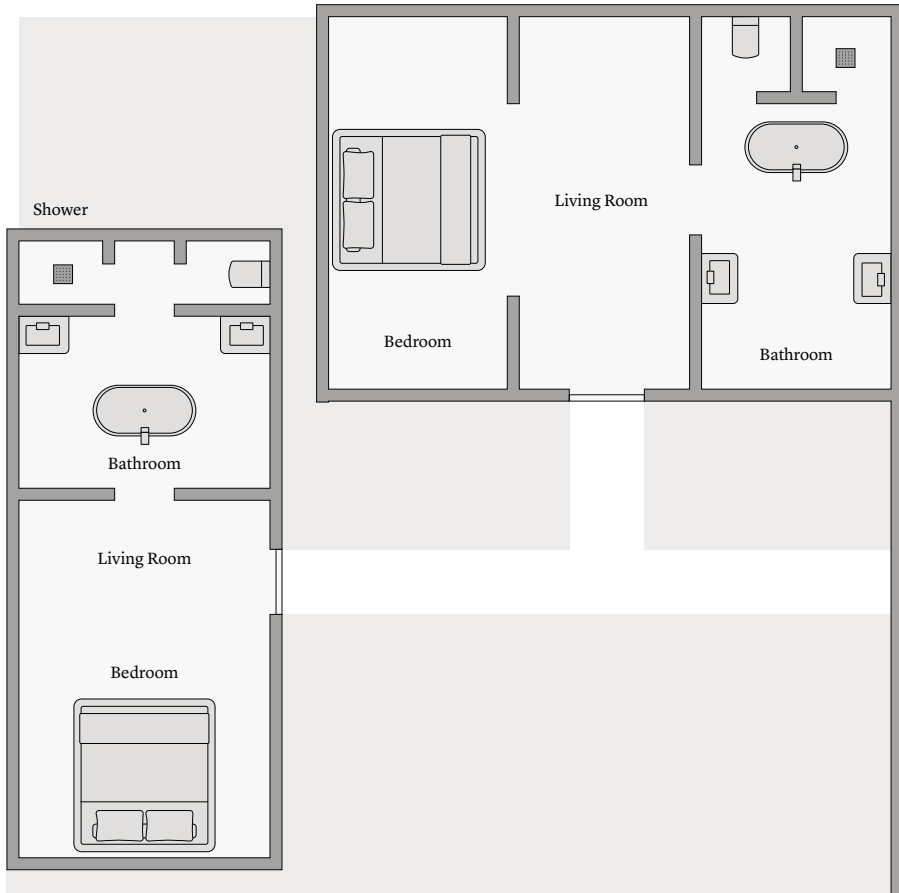
For families or friends travelling together:

- The two-bedroom Family Suite combines a Suite (king-size bed) with a guestroom (king-sized bed)
- The two-bedroom Deluxe Pavilion combines a shared living area with two connecting Deluxe Suites (both with king-size beds)
- The four-bedroom Traditional Courtyard combines a Deluxe Pavilion (two Deluxe Suites) with two Courtyard Guestrooms, all within the same private courtyard

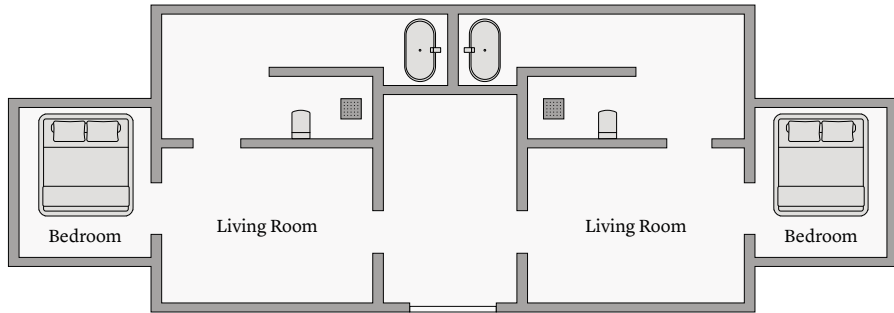
Suite & Guestroom



Courtyard Suite & Deluxe Suite



Deluxe Suite & Courtyard Guestroom





Dining

The Chinese Restaurant

- Open for lunch and dinner
- Serves traditional Cantonese cuisine and Beijing local cuisine
- Three large dining rooms
- Six private dining area
- Decorated with classic Dining rooms Dynasty-inspired furniture

The Grill

- Open for breakfast, lunch and dinner
- Serves Western cuisine
- Specialises in grilled-to-order prime cuts of meat and fresh seafood
- Overlooks a courtyard with tranquil reflection pond across from Nama

Nama

- Open for lunch and dinner
- Serves exquisitely crafted Japanese menus
- Open kitchen
- Counter and table seating available

The Reflection Pavilion

- Serves Western burgers, sandwiches and snacks
- Tranquil setting for afternoon tea
- Peaceful terrace overlooking a lotus pond



Aman Spa

Spread across two subterranean levels, the tranquil Aman Spa is a sanctuary for body and mind. In the nine double treatment rooms, therapies that draw on Imperial traditions range from gemstone massages and scrubs to moxibustion and reflexology. Separate male and female changing areas incorporate steam and sauna rooms, Jacuzzis and cold plunge pools.

Spa

- Housed in the resort's 5,000m², double level, underground recreational facility
- Tranquil reception area
- Nine self-contained double treatment rooms
- Extensive spa menu of health and beauty treatments
- Signature Spa Journeys incorporate reflexology, gemstone massage and aspects of Traditional Chinese Medicine

Fitness & Recreation

- Sky-lit gym with Technogym equipment (including Kinesis)
- Sky-lit Pilates and Yoga Studio with reformers
- One squash court and one ping pong court
- Fitness consultants on hand to offer personal training and squash partners

Swimming Pool

- 25m indoor pool surrounded by loungers



Other Facilities

Boutique

- Offers a variety of unique artefacts and textiles available for purchase

The Theater

- 37 reclining leather seats and 21m² screen

Meeting and Events

- Five Function Hall
- Ideal for business or social events
- Outdoors and Indoors

Wedding Ceremonies

- Tailor-made Chinese or Western menu

Music Pavilion

- Overlooks a serene reflection pond
- Ideal for private dining

Cultural Pavilion

- Local experts demonstrate traditional Chinese arts such as calligraphy and kite building
- Boutique offers a variety of unique artefacts and textiles available for purchase
- Library offers a wide selection of material on various subjects in several languages
- Activity demonstrates traditional Chinese arts such as calligraphy, paper cutting and kite making

The Aman Club

- Open to members only
- Houses a gracious lounge
- Located adjacent to the Arrival Pavilion



Activities & Excursions

China is a land that has fascinated outsiders for centuries. It boasts one of the world's oldest civilisations, and its capital, Beijing, is home to a number of UNESCO World Heritage Sites, including the five below.

The Summer Palace

Also known as Yihe Yuan or 'Gardens of Nurtured Harmony', the Summer Palace was built in 1750. This beautiful 290-hectare garden estate long served the Qing Dynasty as an imperial summer retreat, and today is considered one of China's most peaceful and photogenic sites. The resort shares a wall with the estate and offers easy access.

The Forbidden City

Located in the very heart of Beijing, the Forbidden City was completed in 1420. It served as home for 24 emperors, and as the ceremonial and political centre of Chinese government for almost five centuries. It covers over 720,000m² and consists of 980 surviving buildings with over 8,000 bays of rooms.

The Temple of Heaven

Also completed in 1420, the Temple of Heaven is a complex of graceful buildings once visited by the emperors of the Ming and Qing Dynasties for annual harvest ceremonies. It is regarded as a Taoist temple, although Chinese Heaven worship predates Taoism.

Hutongs

Beijing is renowned for its atmospheric hutongs, which give visitors a glimpse of what life in the city was like in days gone by. Narrow lanes formed by lines of siheyuan – traditional courtyard residences – they are clustered around the Forbidden City.

The Great Wall

Passing through spectacular scenery, the Great Wall grew to its vast length of 6,700km after the unification of China under Qin Shi Huangdi in 220 BC. The Wall stood for centuries, but was breached in the 1300s by the Mongols and in the 1600s by the Manchu. Today, sections have been restored.

Within Beijing are a number of other impressive historic sites including Tiananmen Square, Lama Temple and Fayuan Temple. Beijing is also a treasure trove of contemporary Chinese art. 798 Art Zone, a Soviet-designed former weapons factory, has been transformed into a centre for local modern art and fashion, offering travellers insight into the artistic landscape of China today.

AMAN SUMMER PALACE

1 Gongmenqian Street, Summer
Palace, Beijing, PRC 100091

Tel: (86) 10 5987 9999
Email: amansummerpalace@aman.com
amansummerpalace.com

AMAN
CENTRAL RESERVATIONS

Tel: Singapore (65) 6715 8855 USA (1) 754 216 7830
Email: reservations@aman.com

aman.com

ĀMAN